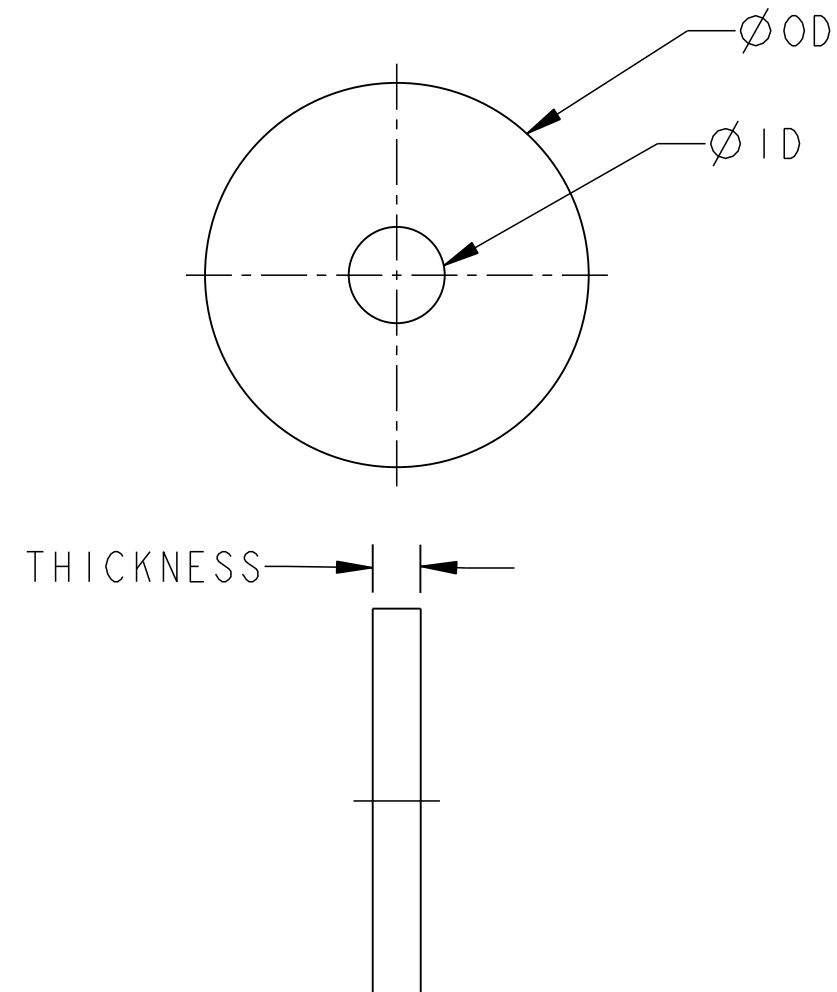


PROPRIETARY
 THIS DRAWING IS CONFIDENTIAL AND IS THE PROPERTY OF POLYMER TECHNOLOGIES INC. AND MAY NOT BE REPRODUCED IN ANY FORM WITHOUT THE WRITTEN CONSENT OF THE OWNER. ALL COPIES ALL COPIES SHALL BE RETURNED TO POLYMER TECHNOLOGIES INC. ON REQUEST

ECO NO.	DATE	REV.	REVISION RECORD	AUTH.	DR. BY

EPSC P/N	O.D.	I.D.	THICKNESS
SW-1625-0322-0933-SZ	1.630	0.322	0.09
SW-1750-0385-0093-SZ	1.750	0.385	0.09
SW-2000-0450-0125-SZ	2.000	0.450	0.13
SW-2000-0510-0125-SZ	2.000	0.510	0.13
SW-2250-0635-0150-SZ	2.250	0.635	0.15
SW-2500-0780-0188-SZ	2.500	0.780	0.19
SW-3250-1010-0250-SZ	3.250	1.010	0.25
SW-2130-0532-0134-SZ	2.130	0.532	0.13
SW-1560-0391-0090-SZ	1.560	0.391	0.09
SW-2810-0657-0188-SZ	2.810	0.657	0.19
SW-3880-0938-0250-SZ	3.880	0.938	0.25
SW-5250-1063-0375-SZ	5.250	1.063	0.38
SW-1250-0400-0125-SZ	1.250	0.400	0.13
SW-1120-0400-0125-SZ	1.120	0.400	0.13
SW-2000-0520-0125-SZ	2.000	0.520	0.13
SW-2880-0660-0125-SZ	2.880	0.660	0.13
SW-2250-0640-0125-SZ	2.250	0.640	0.13
SW-3500-0640-0190-SZ	3.500	0.640	0.19
SW-2500-0640-0125-SZ	2.500	0.640	0.13
SW-4250-0800-0190-SZ	4.250	0.800	0.19
SW-3000-0800-0190-SZ	3.000	0.800	0.19
SW-2250-0520-0125-SZ	2.250	0.520	0.13
SW-4600-0640-0250-SZ	4.600	0.640	0.25



NOTES:

SZ DESIGNATION IS CRS STEEL AND CLEAR TRIVALENT CHROMATE PER ROHS 2002/95/EC.

CAGE CODE IJ8Z4

ITEM	PART No.	QTY.	DESCRIPTION
TOLERANCES (UNLESS OTHERWISE NOTED)			POLYMER TECHNOLOGIES INC. ELASTOMERIC SOLUTIONS DIVISION 76 ASTOR AVE., BLDG. 101 - NORWOOD, MA. 02062
INCHES	MILLIMETERS	TITLE	
.X ± 0.1	X. ± 1.0	REBOUND WASHER	
.XX ± 0.02	.X ± .5		
.XXX ± 0.005	.XX ± .13		
ANG ± 0.5°			
FINISH \checkmark			
DIMENSIONS			
INCHES \longleftrightarrow MILLIMETERS (WHEN APPLICABLE)			
DRAWN BY MJL		DATE 11/24/14	MATERIAL: SEE TABLE
APPROVED BY		DATE	-
SCALE 1.000		SIZE	DRAWING NUMBER
SHT. 1 OF 1		B	2162-00
			REV. -